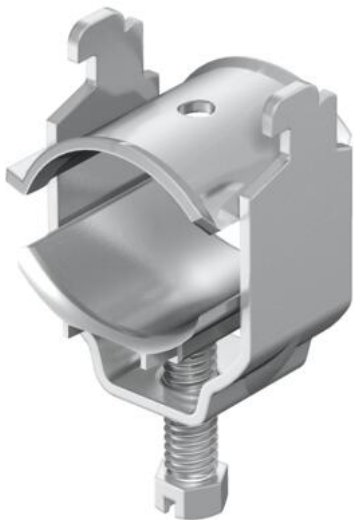


Technical data sheet

Clamp clip for screen connection

Item number: 1167006



For electrical connection of the braided shield of stripped cables.
Delivery complete with counter-trough; pressure trough and VA counter-trough.
A cable screen for protection against electromagnetic influences, can also contribute towards equipotential bonding as both ends are connected to the reference potential.



- A2Stainless steel
- 2BBright, treated

Master data		
Item number	1167006	
Description 1	Clamp clip	
Description 2	for shield attachment	
Manufacturer	OBO	
Dimension	4-8mm	
Material	Stainless steel	
Surface	Bright, treated	
Surface standard		
Smallest sales unit	50	
Unit of quantity	Piece	
Weight	2.9 kg	
Weight unit	kg/100 pc.	
CO Footprint (GWP) Cradle-to-Gate	0,1544 kg COe / 1 Piece	

Technical data sheet

Clamp clip for screen connection

Item number: 1167006



Dimensions

Length	20 mm
Width	12 mm
Height	31.5 mm
Dimension A	20 mm
Dimension B	12 mm
Dimension C	28 mm
Dimension G (mm)	M6
Dimension H	30 mm
Dimension L	32.5 mm
Dimension t	1.5 mm

Technical data

Number of cables/pipes	1
for 2 cable H	30 mm
for 2 cable L	32.5 mm
for rail with slot width (with interval), max.	12 mm
for rail with slot width (with interval), min.	11 mm
Halogen-free	yes
Max. Tightening torque	3 Nm
With plastic trough	no
With metal trough	yes
Mounting type	Profile rail
Impact-resistant	no
Clamping range D, max.	8 mm
Clamping range D, min.	4 mm
Surface addition	Untreated
Material addition	Rustproof steel
With counter-trough	yes
Material of trough	Rustproof steel
Material quality of trough	Stainless steel 304 (1.4301)
Material of counter-trough	Rustproof steel